

# Wincomm Edge AI Ready Solution



[www.wincomm.com.tw](http://www.wincomm.com.tw)

## Wincomm Edge AI Computer Platforms



# Edge AI Ready Solution

As AI continues to revolutionize sectors such as smart hospitals, intelligent medical image processing, industrial automation, and smart buildings, the benefits of AIoT and AIoMT are becoming increasingly evident. AI automates tasks traditionally performed by humans, executing them with greater speed and at a fraction of the cost.

Wincomm has extensive experience in building e-Platforms that seamlessly integrate AI-ready accelerator cards with software toolkits. Our edge AI inference computing solutions enhance efficiency and reduce total cost of ownership over time, offering versatile product combinations, including customizable GPU/VPU cards. Our proven integration designs have established Wincomm as a valuable computing platform provider, with AI-ready solutions poised to secure and expand future business opportunities.

## Edge AI Ready Solution

### Medical Edge AI Inference System



### Accelerator Cards

Vision AI GPU/VPU



The Latest Version MDR, Safety & EMC Certified



Front IP65 Water Proof, IPx1 for Whole System



Friendly Touch Hot keys for Easy Clean

### Industrial Edge AI Modular Panel PC



Flexible Modular Design for Easy Maintenance



Intelligent SW Thermal Management for Optimizing PC Performance



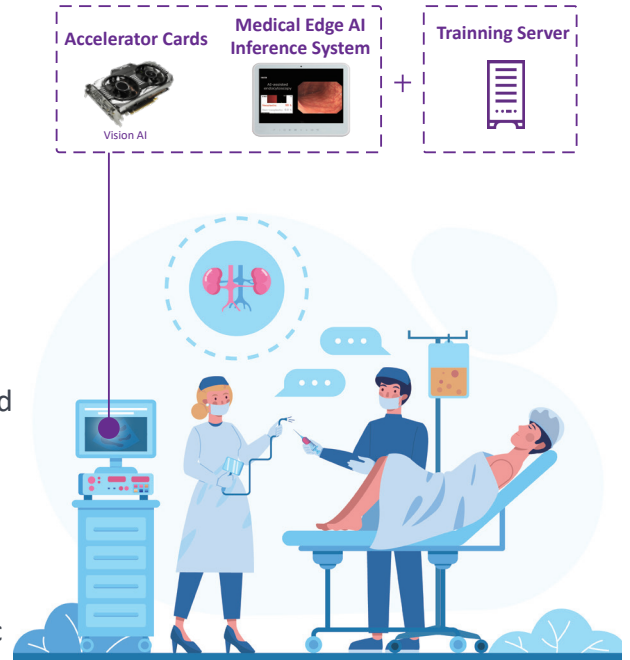
Min. Ventilation Grille & Front IP66 for Dust & Water Proof



## Medical-Grade Edge AI Solutions for Enhanced Endoscopy Diagnostics

In today's healthcare landscape, the demand for faster, more accurate care is paramount. Medical AI enhances diagnostic precision and efficiency, benefiting patients, doctors, and hospitals alike. A key example is the collaboration between Wincomm and CYBERNET SYSTEMS CO., LTD., which developed the EndoBRAIN® and EndoBRAIN-EYE® systems—AI-powered tools designed to detect and analyze colorectal polyps during endoscopy. Integrated into Wincomm's WMP-K series of panel PCs, these advanced systems have received approval from Japan's Pharmaceuticals and Medical Devices Agency (PMDA).

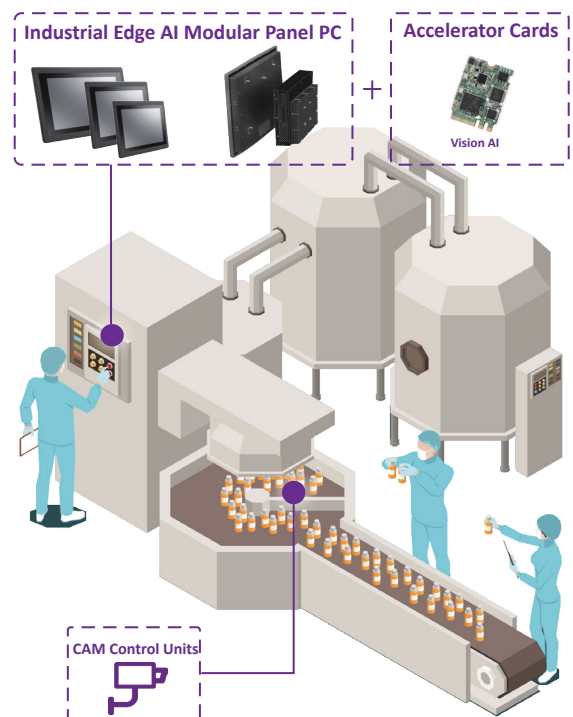
Wincomm's WMP-K and S series Medical AI Panel PCs exceed stringent medical-grade certifications, featuring an independent MXM GPU card with up to 16G of dedicated video memory and an additional PCIe expansion slot. This makes them ideal for complex imaging and AI tasks. By merging AI with high-performance computing, Wincomm provides a comprehensive solution that enhances diagnostic capabilities, offering medical professionals the tools they need for faster, more accurate, and cost-effective care.



## Edge AI Equipped HMI for Food Processing Control

In manufacturing, product defects can impact customer satisfaction and production efficiency, making defect detection during quality control crucial. Implementing AI inference machines significantly improves the accuracy of defect classification, reduces costs, and minimizes human error in daily review processes.

Wincomm's WLPM-900 and WLPM-H00 series feature a flexible modular panel and box PC combination with a docking structure for easy maintenance and reconfiguration. This adaptability makes them ideal for the rapidly changing IIoT environment while keeping ownership costs low. Equipped with Intel® Core i processors and integrated PCIe GPU cards, these Industrial Edge AI Solution panel PCs enhance AI-assisted operations in smart factories. Advanced thermal management in their fanless design ensures high computing performance, making them perfectly suited for AI edge solutions.






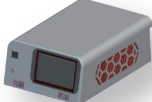



# Product Selection Guide

## Leading AIoMT & AIoT for Medical and Industrial Environments

Wincomm offers a wide range of HMI panel PC, BOX PC from medical grade to industrial grade to suit for artificial intelligent solutions in all kinds of applications.

### Edge AI Medical PC Platform

Product Name	WMP series			WPC series	
	19S	22S	24S	789-PSI	767F
Model					
<b>Main System</b>					
CPU	LGA1700 package 12th /13th /14th generation Intel® Core i7/i5/i3/Pentium/Celeron processor (35W max.)			Intel® 12th Generation Intel® Core i9/i7/i5 Processor, 65W Max	Intel® 8th/9th Generation Intel® Core i7/i5/i3, Pentium and Celeron Processor, 65W max.
Graphic	Intel® integrated HD Graphics 770 by CPU				
Memory	Two 5600 MHz DDR5 SODIMM socket support dual Channel, non-ECC, up to 96GB			DDR4 up to 128G (ECC memory support)	DDR4 up to 32G
Chipset	Intel® Q670E Chipset			Intel® W680 Express	Intel® H310 Express
OS support	Windows 10 IoT LTSC 2021 (64bit) / Windows 11 IoT GAC (64bit)				
<b>Display</b>					
Size	19"	21.5"	23.8"	7"	
Resolution	1280 x 1024 (SXGA)	1920 x 1080 (FHD)		800 x 480 (AHVA)	
Color Numbers	16.7M colors			16.2M	
View Angle (H/V)	170/160	178/178		178 / 178	
Contrast	1000:1		3000:1	41.66736111	
Brightness (nits)	350	250		400	
<b>Touch Panel &amp; IO</b>					
Type	Projected Capacitive Multi-Touch Panel			Projected Capacitive Multi-Touch Panel	
USB	4 x USB 3.2 Gen II (Type A) 1 x USB 3.2 Gen II (Type C, Support DP 1.4a display output; 5V/3A power output)			Front: 2 x USB 3.2 Gen1 (W/Cover) Rear: 5 x USB 3.2 Gen2, 1 x USB 3.2 Gen2x2 Type C Internal: 4 x USB 2.0	
COM	1 x RS232/RS422/RS485, 1 x RS232			2 x RS232/RS422/RS485	
LAN	1 x Intel® i219LM with 10/100/1000 Mbps, support AMT / vPro 1 x Intel® i226V with 10/100/1000/2500 Mbps			3 x RJ-45 (LAN1 : Intel® i225LM Support AMT/Vpro)	
Audio	3.5mm phone jack connector * 2 (Line-out, Mic-In)			3.5mm phone jack (Line in, Line out, Mic in)	
Video	DP 1.4a/DP++ x1, HDMI 2.0b x 1, HDMI-in x 1 (Without Audio)			1 x DP1.4a, 1 x HDMI 2.0, 1 x VGA	
<b>Storage &amp; Expansion</b>					
Storage	M.2 M.Key 2280 PCIe X 4 SSD (Support NVMe SSD up to 1TB) M.2 B/M Key, (2280) with PCIe x1 PCIe/SATA/USB			1 x M.2 (Key M, up to 25110) w/PClex4 Gen4 for SSD 1 x M.2 (Key M, 2242/2260/2280) w/PClex4 Gen3 for SSD 1 x 2.5" SATA3 SSD	
Expansion Slot	M.2 E key 2230 x 1, M.2 B/M Key, (2280) with PCIe x1 PCIe/SATA/USB PCI-E x 4 expansion slot x 1 (40W max)			1 x M.2 (Key E, 2230) for Wireless 1 x M.2 (Key B, 3042/3052) 2 x PCIe Gen4 Slots (PCIe1/PCIe3:single at x16(PCIe1); dual at x8 (PCIe1) / x8 (PCIe3)) / (PCIe1: Support riser card x8/x8), 2 x PClex4 (Gen4)	
<b>Mechanical &amp; Environmental</b>					
Weight (kg)	7.5	8.0	9.0	TBD	
Operating Temp.	0~40°C			0~50°C	
Cooling	Fan				
IP rating	IP65 (Front Side), IPX1 for whole system			-	
<b>Power</b>					
Power Input	DC 14~19V			DC 12~24V	
Power Adapter/ Battery	AC input 100 ~240V / 47 ~ 63 Hz / DC output 19V / 250W (MPU250A-107 W/PSE)			AC input 100 ~240V / 47 ~ 63 Hz / 900W AC input 100 ~240V, DC output 24V 180W	
<b>Certification</b>					
Certification	CE: EN 60601-1-2:2015(V4.1), EN 60601-1:2006 + A11: 2011 + A1: 2013 + A12: 2014 Compliance VCCI: 2016-11, Class B (PSU with PSE) / FCC: Part 18 Class B UL: ANSI/AAMI ES60601-1:2012 (V3.2) (By project) cUL: CAN/CSA-C22.2 No. 60601-1:2014 (V3.2) (By project) ISO 14971 / IEC62133			CE: EN 60601-1-2 (V4.1), EN 60601-1 (V3.2) VCCI: 2016-11, Class B (PSU with PSE -TBD) FCC: Part 18 Class B UL: ANSI/AAMI ES60601-1:2012 (V3.2) cUL: CAN/CSA-C22.2 No. 60601-1:2014 (V3.2) ISO 14971 / IEC62133	
	CE: EN 60601-1-2:2015 (V4.0) VCCI: 2016-11, Class B (Power adapter with PSE) FCC: Part 18 Class B, Canada, ICES-003 UL: ANSI/AAMI ES60601-1:2012 (V3.1) (By Project) cUL: CAN/CSA-C22.2 No. 60601-1:2014 (V3.1) (By Project) ISO 14971 / IEC62133 (By Project)				

# Product Selection Guide

www.wincomm.com.tw

## Edge AI Modular Panel PC Platform

WLP Panel PC Series					
Product Name	WLP-9XX				
	915	917	919	922	924
Model					
Main System					
CPU	Intel® 9th Gen Coffee Lake-S Core i7/i5/i3 Processors, 2.2~3.6GHz, 35W, w/ Q370 Chipset				
Graphic					
Memory	Dual Channel Support 2666MHz DDR4 SODIMM X2, up to 32GB				
OS support	Win 10 (64 bit)				
Display					
Size	15" 4:3	17" 4:3	19" 4:3	21.5" 16:9	23.8" 16:9
Resolution	1024 x 768 (XGA)	1280 x 1024 (SXGA)		1920 x 1080 (FHD)	
Color Numbers	16.7M			16.7M	
View Angle (H/V)	160/160	170/160			178/178
Contrast	800:1	1000:1			3000:1
Brightness (nits)	450	350		250	250
Touch Panel & IO					
Type	Full Flat R-Touch (Default) / P-Cap Touch (Option)				P-Cap Touch
IO	4 x USB3.1, 2x RS232, 1 x RS232/RS422/RS485, 2 x RJ-45, 2 x 3.5mm phone jack connector(Line-out, Mic-in), 3 x DP1.2				
Storage & Expansion					
Storage	1 x 2.5" SATA HDD , 1 x M.2 M.Key 2280 PCIe4 for NVMe SSD				
Expansion slot	1 x M.2 Key E 2230 w/ PCIe1, USB2.0 and CNVI for Wireless, 1 x mini-PCIe for Full/Half w/ PCIe1 and USB2.0, 1 x PCIe16 (25W max.)				
Mechanical & Environmental					
Operating Temp.	Operation: 19V DC Input 0~50°C				
IP rating	IP66 Front				
Cooling	Fanless				
Power					
Power Input	DC19~28V				
Power Adapter	150W (PSU with PSE)				
Certification					
Certification	CE / FCC / VCCI Class B				

## GPU Cards

GPU	RTX-T400	RTX-A400	RTX-A1000		RTX-A2000		RTX-2000 Ada	RTX-A4000	RTX-A4500		RTX-A6000
Model											
Form Factor	PCIex16 PCIe 3.0	PCIex8 PCIe 4.0	MXM Type A / PCIe 4.0		PCIex16 PCIe 4.0	MXM Type A / PCIe 4.0		PCIex16 PCIe 4.0		MXM Type A / PCIe 4.0	PCIex16 PCIe 4.0
Engine	384 CUDA	768 CUDA	2304 CUDA	2048 CUDA	3328 CUDA	2560 CUDA	2816 CUDA	5888 CUDA	7168 CUDA	5888 CUDA	10752 CUDA
Memory	4GD6		8GD6	4GD6	12GD6	8GD6	16GD6	16GD6	20GD6	16GD6	48GD6
Max. Power	30W	50W		60W/35W	70W	60W	70W	80W	200W	80W	300W
OS Support	Win 10/11 64-bit										
Certification	CE/FCC/UKCA										

## Headquarters

3F, No. 14, Prosperity Road II, Science-Based Industrial Park,  
Hsinchu, Taiwan, R.O.C.

Tel +886 3 578 0000

Fax +886 3 577 0631

sales\_support@wincomm.com.tw

## Wincomm USA

2138 Ringwood Avenue, San Jose, CA 95131 USA

sales\_support@wincomm.com.tw

## Wincomm Japan

#206, 4-16-17, Namiki, Kawaguchi-City, Saitama, 332-0034, Japan

sales\_support@wincomm.com.tw



## About Wincomm Corp.

Wincomm is one of Taiwan's leading manufacturer of industrial computer and embedded computer products. Wincomm designs and develops all in one panel PC, rugged box PC and embedded software products for a broad range of medical and industrial applications.